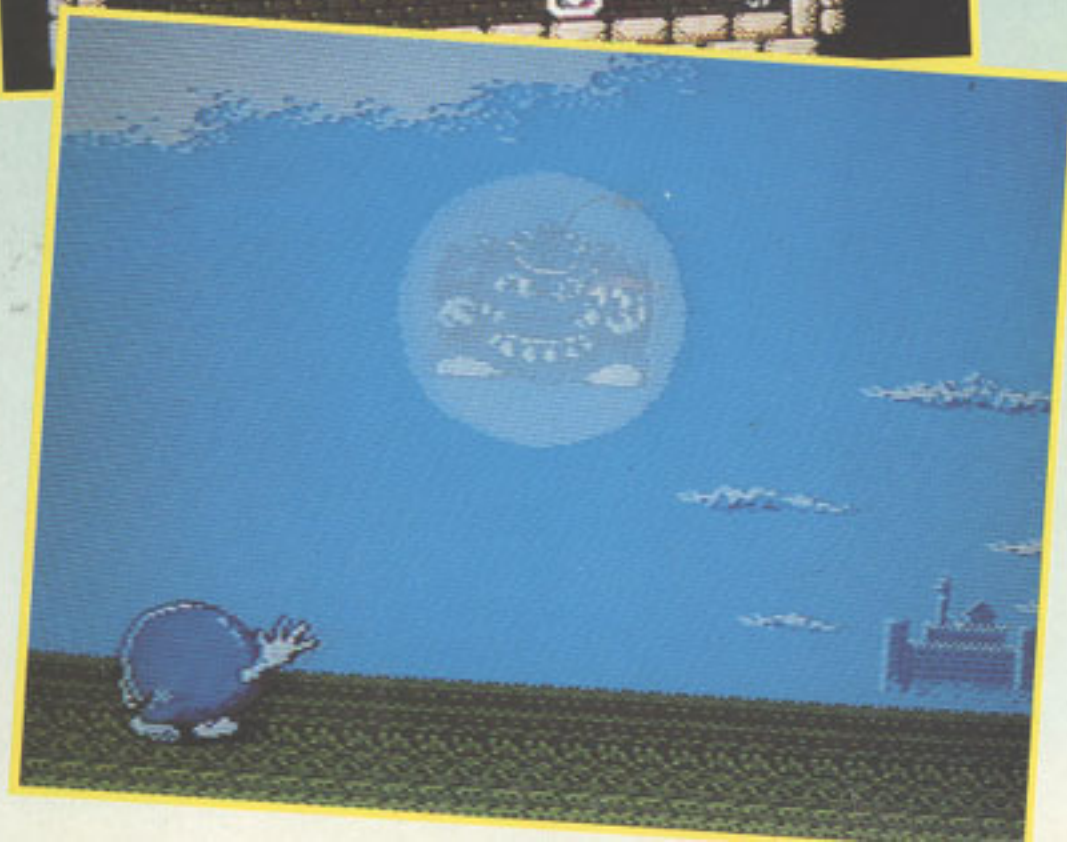


ADVENTURES

NINTENDO



Deranged demons do some pretty strange things at times. Take the demons of the Evil Empire, for example. They didn't have much on their hands, so they decided to kidnap a cute little blob called Princess Lala straight from the amorous clutches of her boyfriend, Lolo.

As you might expect, Lolo was a bit peeved at this, and so decided to check out the castle of the Evil Empire, rescue his princess and give the demons something to think about at the same time...

However, when Lolo actually arrived at the castle, he realised that he'd have to deal with room upon room of devious puzzles before reaching his sweetheart. For each room he'd have to collect some hearts (which incidentally endow him with super powers), wake up the blob-hating inhabitants and collect a special pearl that would open the door to the next room.

The first few rooms in this brain-boggling game are a doddle to complete, but from then on the puzzles just get harder and harder with increasingly vicious monsters just waiting to make a blob sandwich!

OF LOLO

The simplistic graphics may be a bit off-putting, but rest assured, for the gallons of gameplay squeezed into this cart make it one of those puzzlers that'll grab you by the short and curlies and won't let go for a rather long time.

RICHARD LEADBETTER

RATINGS

GRAPHICS 69%

Pretty basic, but what's there is well animated and quite colourful.

SOUND 70%

Jolly 'n' tuneful.

VALUE 84%

Literally months of rewarding puzzling packed into this one.

PLAYABILITY 86%

Glitch-free gameplay - and very enjoyable it is too.

OVERALL 82%

A decent brain-teaser that no self-respecting puzzler should be without.